



# DOWNTOWN LEXINGTON MANAGEMENT DISTRICT

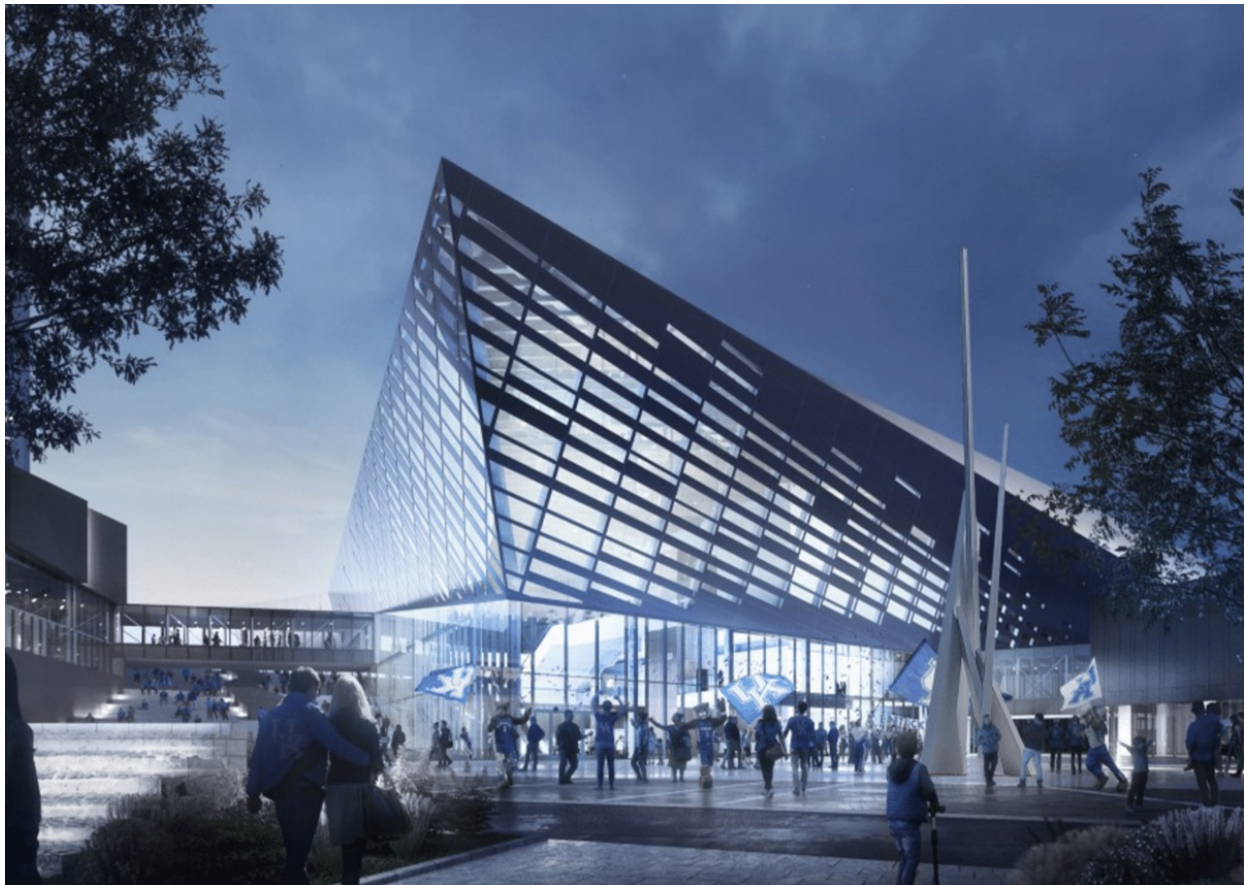
Find us on  
Facebook



PHOTO BY KEN SILVESTRI REAL ESTATE

This quarterly e-newsletter provides updates on the work of the **Downtown Lexington Management District** (DLMD) to maintain and improve the safety, cleanliness and overall quality of life in the District.

## District News



### District contributes to signature sculpture at Central Bank Center

The Downtown Lexington Management District, as part of its art grant program, provided \$10,000 to help relocate and install internationally known metal sculptor John Henry's "Publisher" to Vine Street between Central Bank Center and Triangle Park.

"A significant work of public art has long been contemplated for the Central Bank Center Expansion Project," said Bob Elliston, LCC Board Chairman. "This is a great opportunity to acquire a sculpture that is not only complementary to the architectural design of the new CBC but is especially meaningful as a connection and tribute to one of Kentucky's most celebrated artists."

The 70-foot-tall sculpture was moved from the lawn at Ashland, the Henry Clay Estate, to a premier location on the North Plaza of the new Central Bank Center. It overlooks West Vine

Street and Triangle Park.

“It’s gratifying to know that a sculpture of mine will be sited close to the things I love, the University of Kentucky, my family and friends in the Bluegrass region and of course, the Kentucky Wildcats,” Henry said. “Although I’ve lived away for most of my adult life, Kentucky is my home and where I will lay my head to rest one day.”

*(Image courtesy of the Central Bank Center.)*

Thanks, ambassadors, for all your hard work in 2022!



### Additional security measures in 2022

## SAFETY IN THE DISTRICT

The Lexington-Fayette Urban County Government, the Lexington Police Department, the Downtown Lexington Management District and property owners are working together to enhance safety and security in the area. Key strategies include a larger law enforcement presence and additional lighting for strategic areas in the downtown core.

The District contracted with the Fayette County Sheriff’s office to provide additional deputies and command staff, who were present every weekend from April 6 through Nov. 6. A total of 777 hours were dedicated during this time.

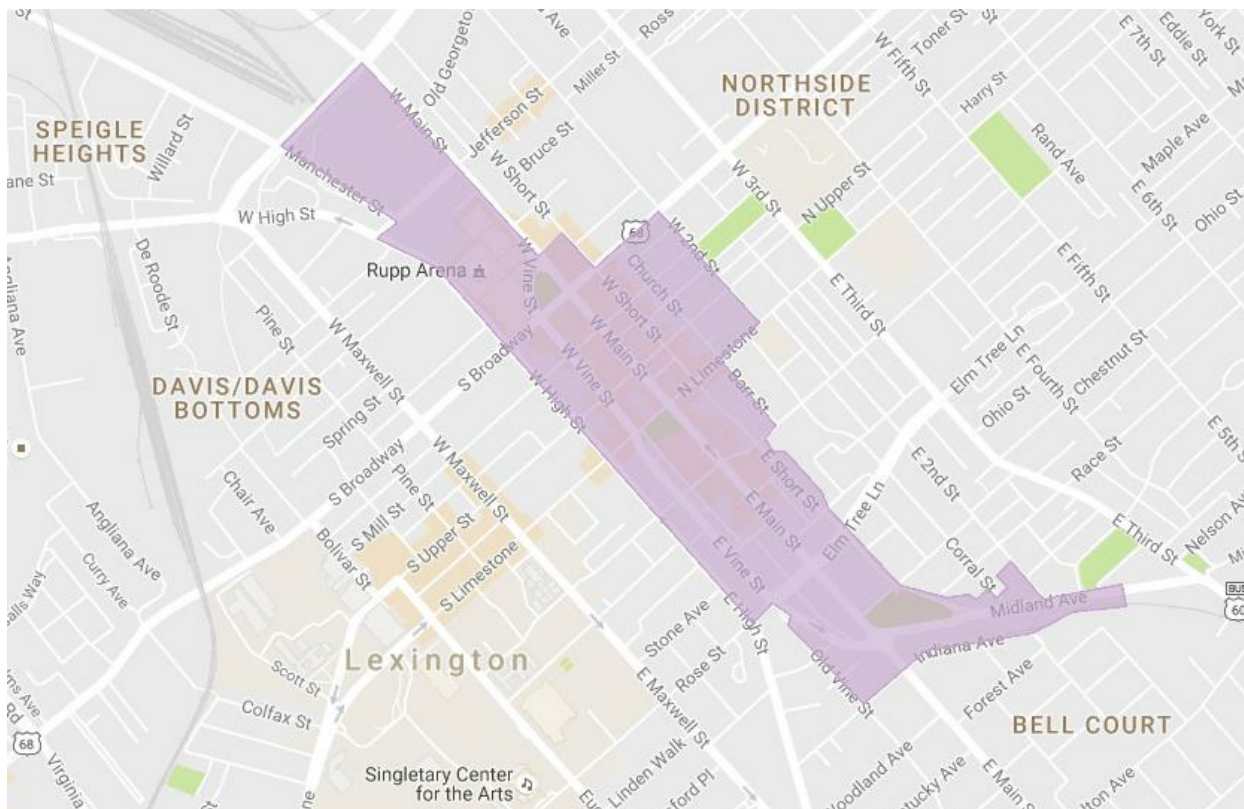
More than 7,500 contacts were made with citizens, business owners and patrons. The majority were patrons and business owners who were appreciative of the law enforcement presence. Some arrests were made for DUI, alcohol intoxication, disorderly conduct, assault, domestic violence assault and wanton endangerment.

The Sheriff’s Department also stated that increased lighting in and around Tandy Park was very beneficial to both law enforcement and patrons.

**Next Board Meeting:**  
8:30 a.m. Wednesday, March 1  
201 E. Main St., 9th Floor

Board meetings are open to the public.

# The District



Since May 2015, the Downtown Lexington Management District (DLMD) has been implementing improvements to create a Safe, Clean, Beautiful Lexington.

As a property tax improvement district responsible for improving the downtown area, DLMD puts tax dollars to work to enhance downtown through beautification and safety. The goal of the District is to foster economic growth; renew interest in the area by businesses, residents, and visitors; and ultimately increase property values.

You can find the DLMD ambassadors in purple polos working to improve the downtown area every day.

We want to thank you for your support, tell you about some of the District's accomplishments and make you aware of activities that will enhance the District even more.

If you have any questions, concerns, comments or ideas, we want to hear them. The DLMD administrative office is located at 201 East Main Street, Suite 900, and can be reached by email at [info@dlex.town](mailto:info@dlex.town).

DLMD | 201 East Main St, Suite 900, Lexington, KY 40507 [www.dlex.town](http://www.dlex.town)

[Unsubscribe bpowers@mcbayerfirm.com](mailto:bpowers@mcbayerfirm.com)

[Update Profile](#) | [Constant Contact Data Notice](#)

Sent by [info@dlex.town](mailto:info@dlex.town) in collaboration with



Try email marketing for free today!